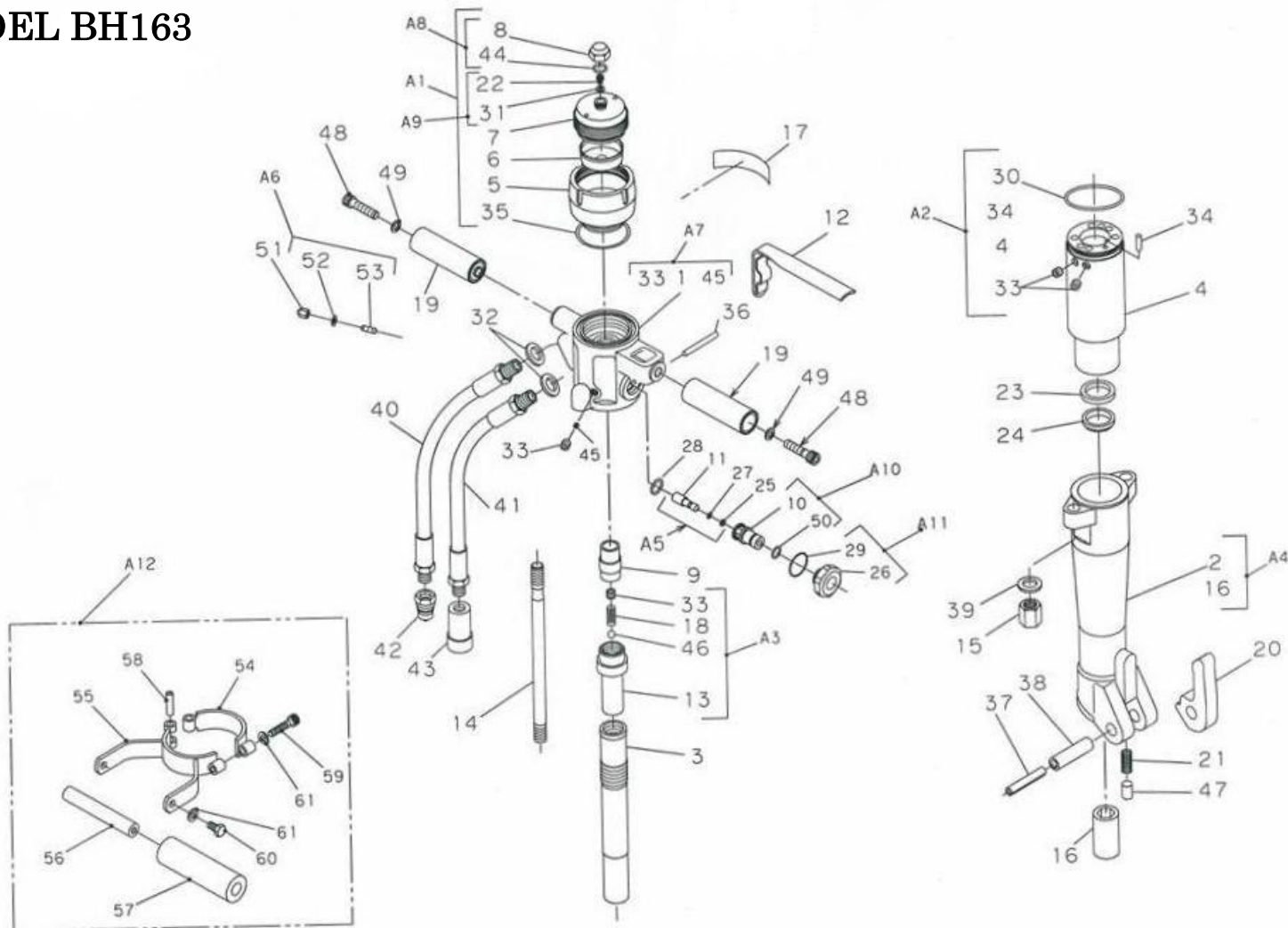


EXPLODED VIEW MODEL BH163



PARTS LIST FOR MODEL BH163

No.	CODE	DESCRIPTION	Q'TY	No.	CODE	DESCRIPTION	Q'TY
1	M1XTC101B	Valve Body	1	24	LBI 30, 38, 5, 6.5	Dust Seal	1
2	M1XTC102A	Front End	1	25	OBP-5	Back Up Ring	1
3	M1XTD103A	Piston (A)	1	26	M1KTZ281A	Bush	1
4	M1XTD104B	Cylinder (A)	1	27	OP-5	O Ring	1
5	M1XTD105A	Shell	1	28	FRO307W-P14	O Ring	1
6	MB02E006A	Diaphragm	1	29	CO-0621	O Ring	1
7	M1XTE110A	Lid	1	30	OG-60	O Ring	1
8	M1KTE108A	Cap Nut	1	31	W6S1	Seal Washer	1
9	M1XTE108A	Control Valve	1	32	W18S1	Seal Washer	2
10	M1KTZ280A	Valve Guide	1	33	BPH1-PT1/8	Plug	8
11	M1KTE111A	Valve Rod	1	34	PR-6×20	Pin	1
12	M1KTE112A	Control Lever	1	35	OG-65	O Ring	1
13	M1XTE109A	Inner Tube	1	36	PR-5×36	Pin	1
14	M1XTE111A	Draw Bolt	2	37	PR-10×60	Pin	1
15	1120-423-C	Nut	2	38	PR-16×60	Pin	1
16	M1KTE116A	Chisel Bushing	1	39	WF-14 2L JIS B1252	Washer	2
17	M1XTE117A	Seal	1	40	21091·3-35--	High Pressure Hose	1
18	M1HTE107A	Spring (P)	1	41	21091·3-50--	Low Pressure Hose	1
19	M1KTE119A	Handle Grip	2	42	QC-03	Coupler (Male)	1
20	1120-419-G	Latch (1")	1	43		Coupler (Female)	1
21	1110-410-01	Lock Spring	1	44	OS-22.4	O Ring	1
22	1120-413-D	Cap Bolt	1	45	M1XTZ152A	M6 Orifice (ø2.7)	1
23	IUIS 30, 40, 6	U Cup Packing	1	46	QB-5/16"	Steel Ball	1

PARTS LIST FOR MODEL BH163

No.	CODE	DESCRIPTION	Q'TY	No.	CODE	DESCRIPTION	Q'TY
47	M1KTE173A	Lock Pin	1	55	1120-420	Handle Stay	1
48	BH-12×50	Bolt	2	56	1120-422	Center Core	1
49	WF-12-2L	Washer	2	57	1120-414	Handle Grip	1
50	CO 0601	O-Ring	1	58	PR-8×30	Pin	1
51	MB24Z035A	Cap Nut	1	59	BH-8×35	Bolt	1
52	W6S1	Seal Washer	1	60	B-8×16	Bolt	2
53	SH-6×16	Screw	1	61	WS-8	Washer	3
54	1120-421	Half	1	62	MB850-040	Expander	1

No.	CODE	DESCRIPTION	Q'TY	CONTENT
A1	M1XTZ501A	ACCUMULATOR ASS'Y	1	5、6、7、8、22、31、44 (WITHOUT NITROGEN GAS)
A2	M1XTZ502A	CYLINDER (A) ASS'Y	1	4、30、33(5)、62
A3	M1XTZ503A	INNER TUBE ASS'Y	1	13、18、33、46
A4	M1XTZ504A	FRONT END ASS'Y	1	2、16
A5	M1XTZ505A	VALVE ROD ASS'Y	1	11、25、27
A6	M1XTZ506A	STOPPER SCREW ASS'Y	1	52、53
A7	M1XTZ507A	VALVE BODY ASS'Y	1	1、33(2)、45
A8	MB24Z508A	CAP ASS'Y	1	8、44
A9	MB24Z509A	CAP BOLT ASS'Y	1	22、31
A10	M1XTZ510A	VALVE GUIDE ASS'Y	1	10、50
A11	M1XTZ511A	BUSH ASS'Y	1	26、29
A12	M1XTZ512A	SIDE HANDEL ASS'Y	1	54、55、56、57、58、59、60、61(3)
A13	M1XTZ513A	SEAL KIT	1	23、24、25、27、28、29、30、31、32、35、44、50、52