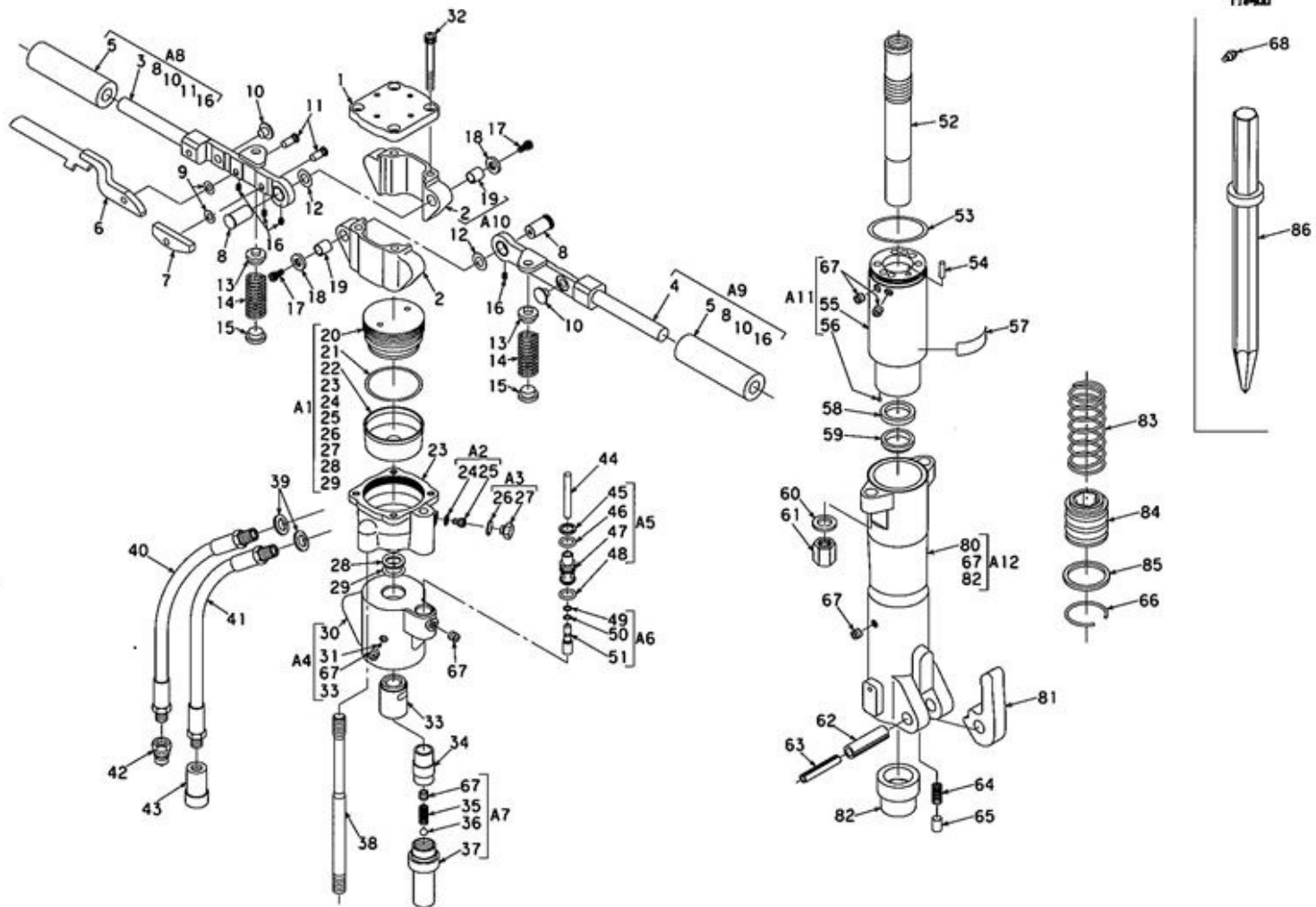


EXPLODED VIEW MODEL BH20EV



N o .	Part No.	Part Name	Q'ty	N o .	Part No.	Part Name	Q'ty
1	MB19Z010A	Cover	1	22	MB02E006A	Diaphragm	1
2	MB19Y001B	Cover	2	23	MB19Y002A	Shell	1
*3	MB35Z009A	Handle (L)	1	24	WS-06<<<<<<<<<BH	Seal Washer	1
*4	MB19Z023B	Handle (R)	1	*25	1120-413-D	Cap Bolt	1
5	1120-414	Handle Grip	2	26	OS-15	O-Ring	1
6	MB35Z010A	Control Lever	1	27	MB35Z017A	Plug	1
7	MB19Z016A	Lever	1	28	OBP-22	Back up Ring	1
8	MB19Z008B	Pin	2	29	OP-22	O-Ring	1
9	MB19Z035A	Washer	2	*30	MB32X002A	Valve Body	1
10	MB19Z021A	Pad	2	31	M2LTE120 A	M6 Orifice(φ2.6)	1
11	MB19Z006A	Pin	2	32	BH-8×70 (Zn)	Bolt	4
12	MB19Z024B	Washer	2	*33	MB32Z003A	Valve Bush	1
13	MB19Z020A	Spring Washer	2	34	M1XTE108A	Control Valve	1
14	MB19Z007A	Spring	2	35	M1HTE107A	Spring (P)	1
15	MB19Z019A	Spring Washer	2	36	QB-5/16	Steel Ball	1
16	SH-5x8 (Togarisaki)	Stopper Screw	4	*37	MB32Z004A	Inner Tube (V)	1
17	BH-6×12	Bolt	2	38	MB19Z009A	Through Bolt	2
18	MB19Z030A	Guide Bush	2	39	WS-18<<<<<<<<<BH	Seal Washer	2
19	K5①1620	DU Bush	2	40	21091・3-35-	Hose	1
20	MB19Z011A	Lid	1	41	21091・3-50-	Hose	1
21	CO-0644	O-Ring	1	42	QC-03M	Coupler (Male)	1

No.	Part No.	Part Name	Q'ty	No.	Part No.	Part Name	Q'ty
43	QC-03F	Coupler (Female)	1	64	1110-410	Lock Spring	1
44	MB19Z014A	Push Rod	1	65	M1KTE173A	Lock Pin	1
45	OBP-14	Back up Ring	1	66	MB37Z001A	Ring	1
46	OP-14	O-Ring	1	67	BPH1-PT1/8	Plug	10
*47	M2LTE108A	Valve Guide	1	68	GN-01	Grease Nipple (Accessory)	1
48	OP-12.5	O-Ring	1	*80	MB37X015A	Front End (K)	1
49	OBP-5	Back up Ring	1	81	1110-402	Latch	1
50	OP-5	O-Ring	1	*82	MB37Z012A	Fixed Bush	1
*51	M1KTE111A	Valve Rod	1	83	MB37Z011A	Spring	1
52	MB18Y046A	Piston	1	84	MB37Z013A	Movable Bush	1
53	OG-60	O-Ring	1	85	MB37Z014A	Washer	1
54	PR-6x20	Pin	1	86	MZ42-002D	Moil Point (Accessory)	1
*55	M1XTD104B	Cylinder (A)	1				
56	MB850-040	Expander	1				
57	MB29Z023A	Maruzen Sticker 2	1				
58	IUIS 30、40、6	U Cup Packing	1				
59	LBI 30、38、5、6.5	Dust Seal	1				
60	WF-14 2L	Washer	2				
61	1120-423	Nut	2				
62	PR-16x60	Pin	1				
63	PR-10x60	Pin	1				

No.	Code	Descriptions	Qty	
A 1	MB19Z051A	Accumulator Assy	1	20, 21, 22, 23, 24, 25, 26, 27, 28, 29
A 2	MB24Z509A	Cap Bolt Assy	1	24, 25
A 3	MB35Z075A	Plug Assy	1	26, 27
A 4	MB32Z500A	Valve Body Assy	1	30, 31, 33, 67(4)
A 5	M2LTZ506A	Valve Guide Assy	1	45, 46, 47, 48
A 6	M1XTZ505A	Valve Rod Assy	1	49, 50, 51
A 7	MB32Z501A	Inner Tube Assy	1	35, 36, 37, 67
A 8	MB35Z501A	Handle (L) Assy	1	3, 5, 8, 10, 11(2), 16(3)
A 9	MB19Z040A	Handle (R) Assy	1	4, 5, 8, 10, 16
A 10	MB19Z044A	Cover Assy	2	2, 19
A 11	MB19Z052A	Cylinder Assy	1	55, 56(1), 67(4)
A 12	MB37Z502A	Front End (K) Assy	1	67, 80, 82
A 13	MB19Z039A	Seal Kit	1	21, 24, 26, 28, 29, 39(2), 45, 46, 48, 49, 50, 53, 58, 59