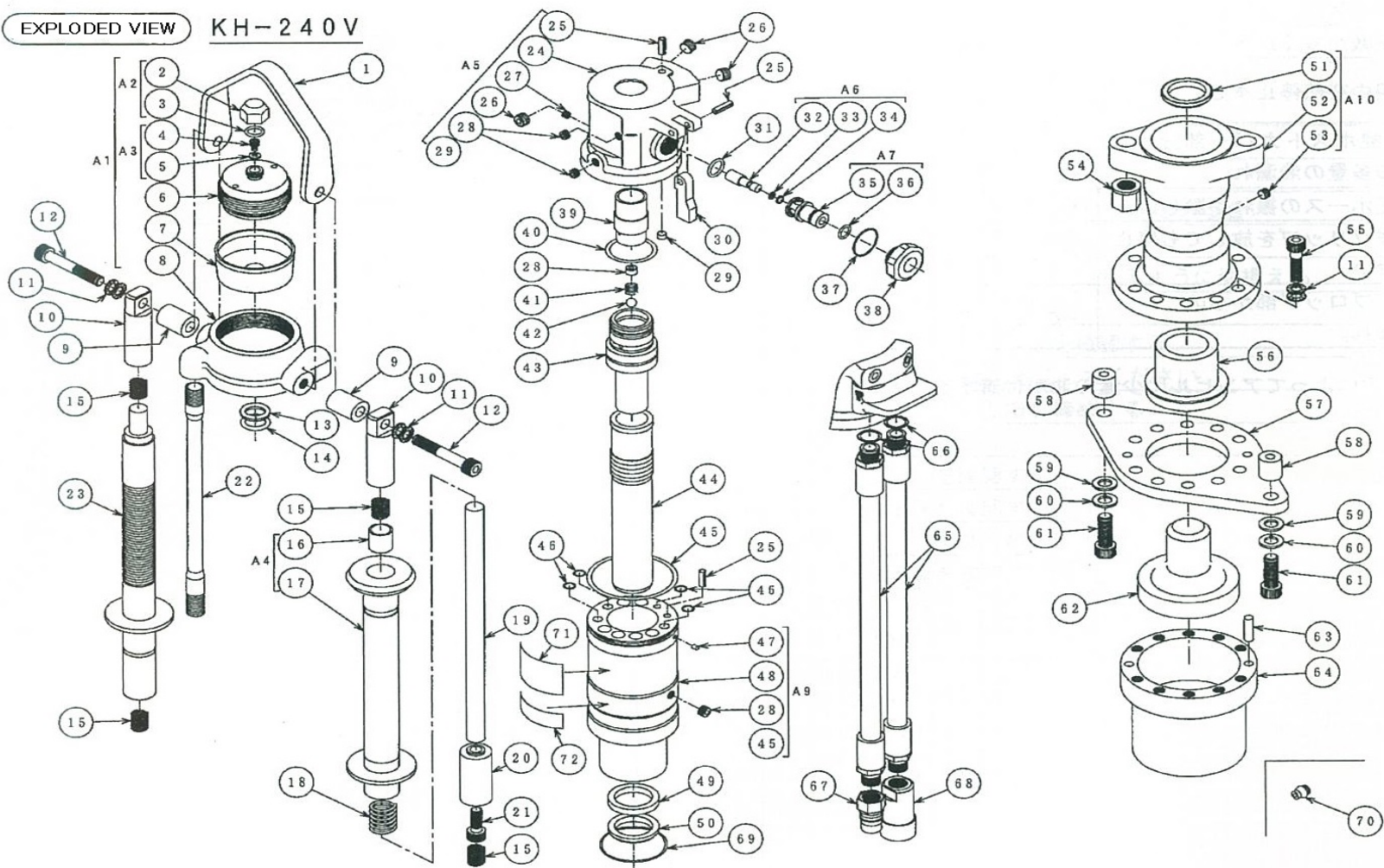


EXPLODED VIEW

KH-240V



PARTS LIST (I) MODEL KH240V * only can be supplied as assembly parts

No.	Code	Descriptions	Q'ty	No.	Code	Descriptions	Q'ty
1	MB38Z021A	Hook	1	25	PR-6x20	Pin	3
*2	M1KTE108A	Cap nut	1	26	BPH1-PT1/4	Plug	3
3	OS-22.4	O-ring	1	27	MB13Z018A	Orifice plug(φ 4.0)	1
*4	1120-413-D	Cap bolt	1	28	BPH1-PT1/8	Plug	6
5	WS-06<<<<<<<<BH	Seal washer	1	29	BPH1-PT1/16	Plug	1
6	M1XTE110A	Lid	1	30	MB38Z023A	Cam	1
7	MB02E006A	Diaphragm	1	31	FR307W	O-ring	1
8	MB38Y001A	Shell	1	*32	M1KTE111A	Valve rod	1
9	MB38Z022A	Caller	2	33	OP-5	O-ring	1
10	MB38Z018A	Spring holder A	2	34	OBP-5	Back up ring	1
11	NL-10	Washer	12	*35	M1KTZ280A	Valve guide	1
12	BH-10x65	Bolt	2	36	CO-0601	O-ring	1
13	OBP-22	Back-up ring	1	37	CO-0621	O-ring	1
14	OP-22	O-ring	1	*38	M1KTZ281A	Bush	1
15	51-1635	Spring	4	39	MB38Z007A	Control valve	1
16	K5B1620	DU bush	1	40	OP-38	O-ring	1
*17	MB38Y016A	Operating grip	1	41	M1HTE107A	Spring (P)	1
18	5549	Spring	1	42	QB-5/16	Steel ball	1
19	MB38Z015A	Handle shaft	1	*43	MB38Y008A	Inner tube	1
20	MB38Z020A	Spring holder B	1	44	MB38Y009A	Piston	1
21	BH-10x25	Bolt	1	45	OG-75	O-ring	1
22	MB38Z013A	Through bolt	2	46	FR0329W	O-ring	4
23	MB38Z017A	Handle pipe	1	47	MB850-040	Kenick expander	3
*24	MB38X003A	Valve body	1	*48	MB38X010A	cylander	1

No.	Code	Descriptions	Q'ty	No.	Code	Descriptions	Q'ty
49	IUIS 35.5, 45, 6	U-cup packing	1	61	BH-12x35	Bolt	2
50	LBI 35.5, 43.5, 5, 6.5	Dust seal	1	62	MB38Z012A	Anvil	1
51	FD2149A0	Dust seal	1	63	PFB-8x32	Pin	2
*52	MB38X005A	Front cap	1	64	MB18Y070A	Post cover	1
53	BPH1-PT1/8	Plug	1	65	KH01Z572A	3/8 O-ring port hose	2
54	MB38Z014A	Nut (M16)	2	66	OP-14	O-ring	2
55	BH-10x40	Bolt	10	67	QC-03M	Coupler (male)	1
56	MB38Z011A	Chisel bushing	1	68	QC-03F	Coupler(female)	1
57	MB38Z024A	Flange	1	69	CO 7772A	O-ring	1
58	MB38Z019A	Boss	2	70	GN-01	Grease nipple	1
59	WP-12	Washer	2	71	MB38Z028A	Label	1
60	WS-12	Washer	2	72	MB29Z023A	Label	1

Assembly Parts

No	Code	Descriptions	Q'ty	Content
A1	MB38Z501A	Accumulator Assy	1	2,3,4,5,6,7,8
A2	MB24Z508A	Cap nut Assy	1	2,3
A3	MB24Z509A	Cap bolt Assy	1	4,5
A4	MB38Z506A	Operating grip Assy	1	16,17
A5	MB38Z502A	Valve body Assy	1	24,25,26(3),27,28,29
A6	M1XTZ505A	Valve rod Assy	1	32,33,34
A7	M1XTZ510A	Valve guide Assy	1	35,36
A8	MB38Z503A	Inner tube Assy	1	28,41,42,43
A9	MB38Z504A	Cylinder Assy	1	28(4),45,47(3),48
A10	MB38Z505A	Front cap Assy	1	51,52,53,56
A11	MB38Z500A	Seal kit Assy	1	3,5,13,14,31,33,34,36,37,40,45,46(4),49,50,51