

7 PARTS LIST

The following parts list applies to the 5gpm Mini Hydracutter only. The parts list for the hydraulic power source is in the separate manual supplied for this item. Each item number on the following parts list can be matched with the item number shown on the Figure 7-1 assembly drawing.

| Item Number | Part Number | Quantity | Description |
|-------------|-------------|----------|---|
| 1 | 1911306 | 1 | MAIN FRAME POWER COAT BLUE |
| 2 | 7404608 | 1 | QUAD RING Q4016-366Y |
| 3 | 6004625 | 1 | VALVE HYD 3 PORT- SPOOL |
| 4 | 6004627 | 1 | VALVE HYD 3 PORT- SPOOL RETAINER |
| 5 | 5804653 | 1 | SCREW SHCS 8-32 X ½ |
| 6 | 5804641 | 1 | SPRING COMPRESSION |
| 7 | 5804654 | 1 | SPRING COMPRESSION |
| 8 | 1911321 | 1 | VALVE BODY COVER |
| 9 | 5811925 | 2 | ROLL PIN 3/16 X 1-1/8 CZP |
| 10 | 5806790 | 1 | ROLL PIN 5/32 X ½ |
| 11 | 7404628 | 2 | QUAD RING Q4111-366Y |
| 12 | 5804680 | 4 | ADAPTER 9/16 SAEM- ¼ JICM |
| 13 | 6011946 | 1 | TRIGGER HANDLE/ VALVE LINK |
| 14 | 5811922 | 1 | ROLL PIN 1/8 X 3/8 CZP |
| 15 | 1911913 | 1 | TRIGGER LOCK |
| 16 | 5811931 | 1 | SPRING COMPRESSION 5/16 OD X 1-3/8 X .031WIRE |
| 17 | 1911910 | 1 | TRIGGER LEVER |
| 18 | 5811928 | 4 | SCREW FLAT HD 8-32 X ½ PH CZP |
| 19 | 1911215 | 1 | CHAIN HYDRACUTTER COVER |
| 20 | 1911210 | 1 | AUX. HANDLE ASSY |
| 21 | 5806202 | 2 | HHCS ¼-20 X ½" CZP |
| 22 | 1911303 | 1 | AUX. HANDLE MTG BAR |
| 23 | 1911928 | 1 | HAND GUARD |
| 24 | 5807195 | 1 | TRANTORQUE 9/16 X 1 |
| 25 | 6511955 | 1 | HYD MOTOR 5GPM MINI HYDRACUTTER |
| 26 | 5806368 | 1 | NUT CENTERLOCK 3/8-16 CZP |
| 27 | 5806344 | 2 | 3/8-16 X 1" SOC FLAT HD SCREW CZP |
| 28 | 1911931 | 2 | MINI-SAW MTG STUD 3/8-16 X 2" |
| 29 | 5806149 | 2 | NUT FLANGED 3/8-16 CZP |
| 30 | 5806206 | 1 | HHCS ¼-20 X ¾ LG CZP |
| 31 | 1697502 | 2 | ½" X 12" HOSE WHIP |
| 32 | 6711961 | 1 | CHAIN DRIVE SPROCKET |
| 33 | 5804684 | 2 | ADAPTER 90 DEGREE ¼ SAEM- ¼ JICM |
| 34 | 1911407 | 1 | 5GPM TUBE ASSY- PRESSURE |
| 35 | 1911410 | 1 | 5GPM TUBE ASSY- RETURN |

| | | | |
|----|---------|----------|---|
| 36 | 1911309 | 1 | SPLASH GUARD MTG CLAMP |
| 37 | 6001885 | 1 | COUPLING MALE |
| 38 | 6001886 | 1 | COUPLING FEMALE |
| 39 | 5806317 | 1 | SHCS 1/4-20 X 1/4 |
| 40 | 6411952 | 1 | SPLASH GUARD 3/16 X 8 X 8 |
| 41 | 5600966 | 1 | HOSE FITTING 1/4 NPTM X 1/4 BARB |
| 42 | 5607162 | 1 | FITTING 1/4 GHF X 1/4 BARB |
| 43 | 5901820 | 1.125 FT | HOSE 1/4" PUSH LOCK "BLACK" |
| 44 | 1911312 | 1 | SPLASH GUARD MTG BRACKET |
| 45 | 5811937 | 1 | PAN HEAD SCREW 10-32 X 2-1/2 PHIL |
| 46 | 7404780 | 1 | FELT GASKET 1/2 X 1-1/4 X 1/4 |
| 47 | 5806111 | 1 | NUT HEX NYLOCK 10-32 SS |
| 48 | 1911922 | 1 | CHAIN BAR ADJUST PIN |
| 49 | 5816211 | 2 | SCREW FLAT HD 8-32 X 1/4 PH CZP |
| 50 | 5894103 | 2 | NUT HEX NYLOCK 8-32 SS |
| 51 | 5611235 | 1 | ADAPTER 90D 1/4 TUBE PUSH-TO-CONN X 1/4NPTM |
| 52 | 5620869 | 1 | ADAPTER 90D 1/4 TUBE PUSH-TO-CONN X 1/8NPTM |
| 53 | 5920843 | .8FT | HOSE POLYETHYLENE 1/4 OD |
| 54 | 5804393 | 3 | WASHER FLAT SAE 1/4" CZP |
| 55 | 5806406 | 2 | WASHER FLAT SAE 3/8" CZP |
| 56 | 5806241 | 2 | SCREW PH MS 1/4-20X1/2 PHIL SS |

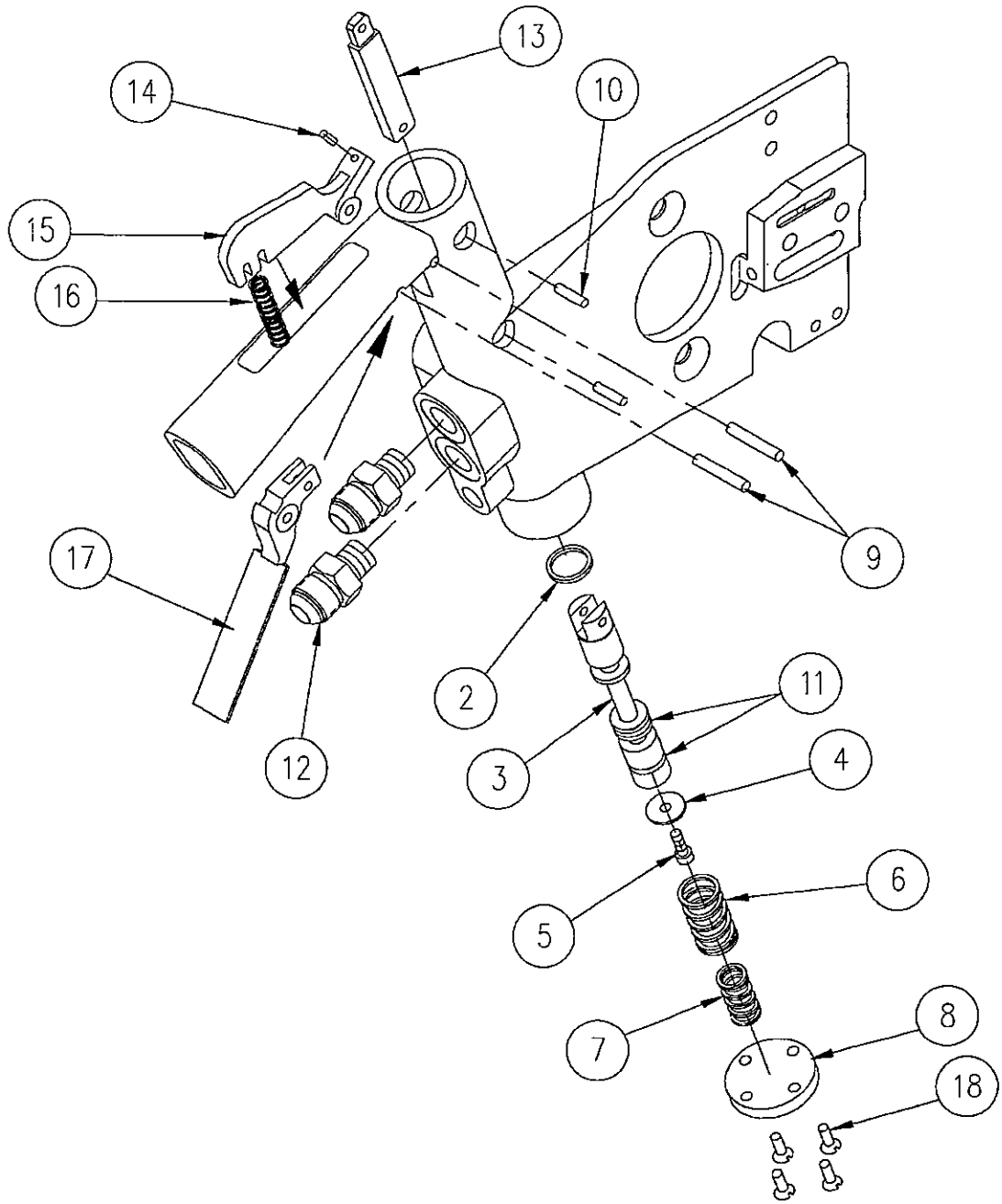


Figure 7-1.
5gpm Mini Hydracutter Frame & Valve Assembly

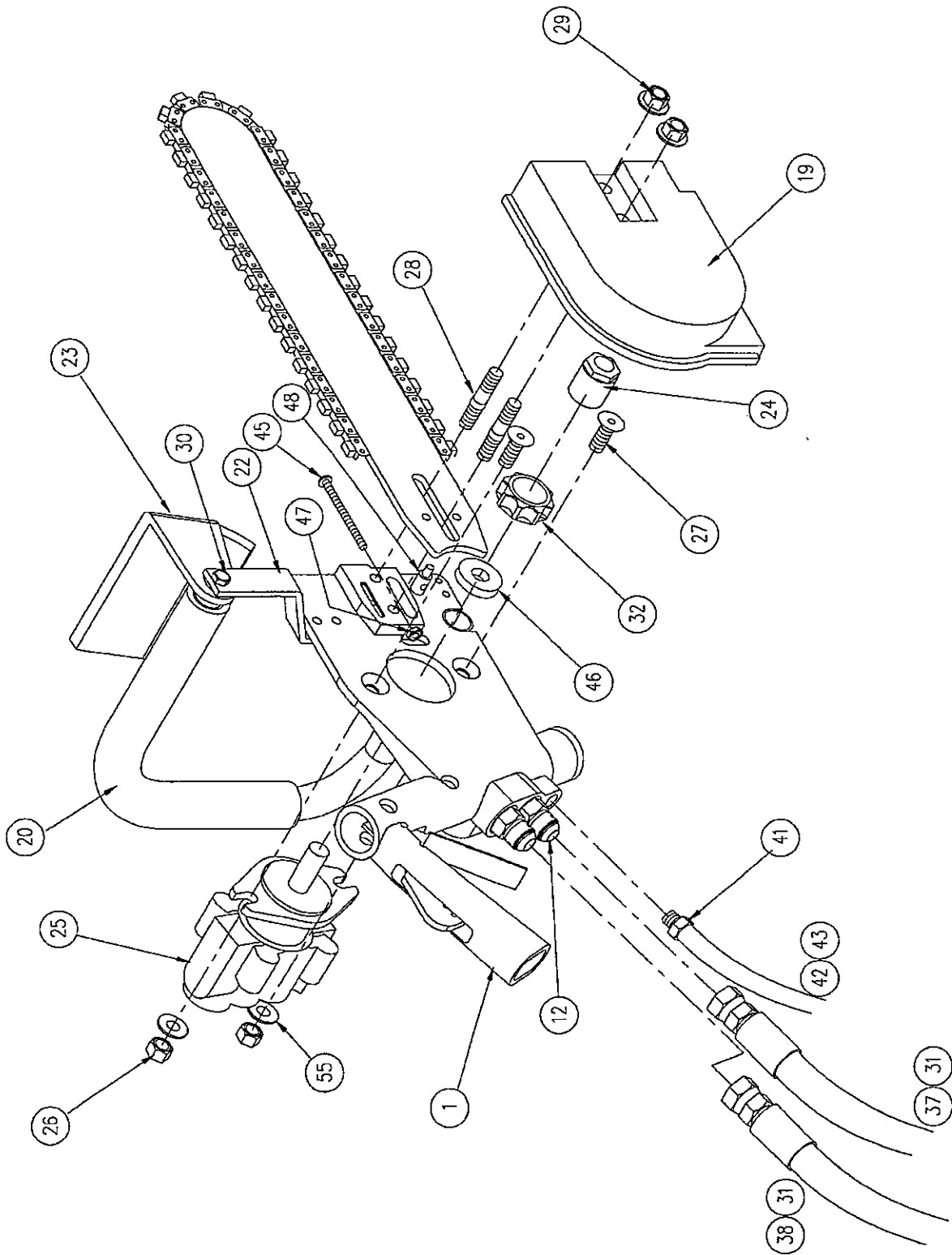


Figure 7-2.
5gpm Mini Hydracutter Assembly - Front View

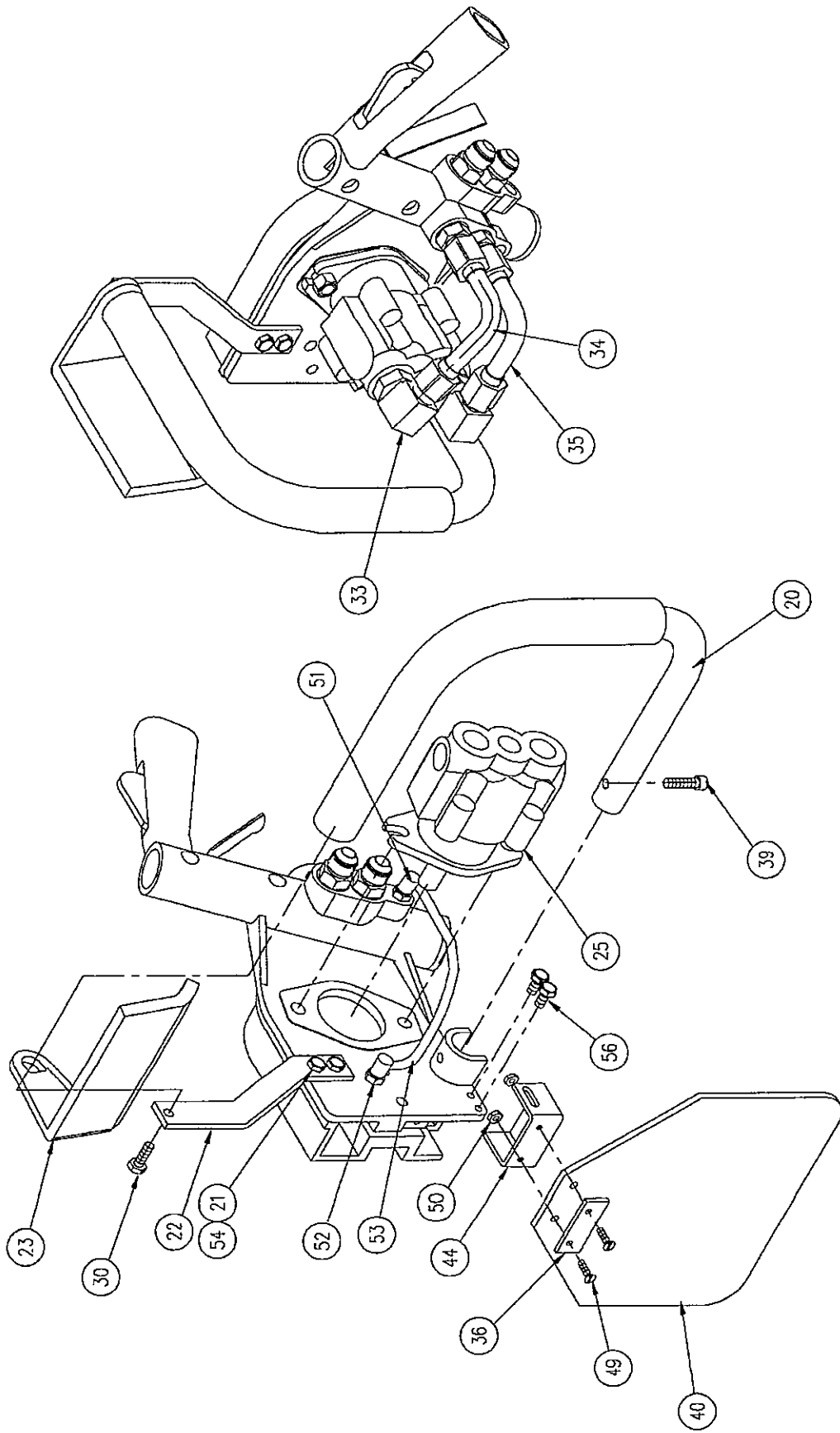


Figure 7-3.
5gpm Mini Hydracutter Assembly- Back View